



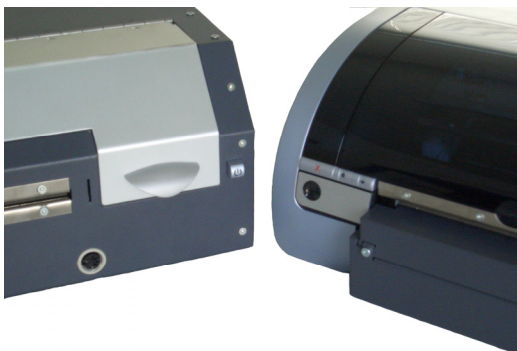
ILP

Ink-Label-Printer

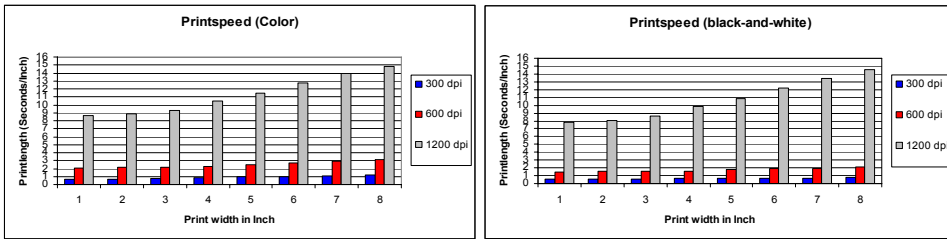
KOMDRUCK **ILP**

(Ink-Label-Printer)

- ▲ Prints full-color labels, RFID-tags, tickets,
- ▲ Handles roll fed label/tag as well as sheets from as small as 38 x 40mm to as large as 216 x 500mm
- ▲ High print quality (up to 1200dpi black-and-white, 4800dpi color)
- ▲ Print speeds up to 1 Inch/second (black-and-white)
- ▲ Easy to install photo quality printing option
- ▲ Very simple to operate



The KOMDRUCK *ILP* is a color inkjet label printer for the industrial use that features state-of-the-art technology for material handling to achieve a highly precise print placement. This one-of-a-kind printer provides professional high quality label and tag printing (up to 1200dpi black-and-white and 4800dpi color) and a high print speed (up to 1 inch/second, see chart below). This makes the KOMDRUCK *ILP* the ultimate solution for short-run full color label printing.

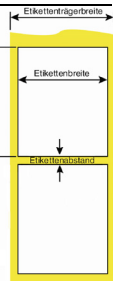


The KOMDRUCK *ILP* is designed to handle a variety of print media and media sizes ranging from fanfold paper to roll fed labels and tags (from 1.5" up to 8.5" wide) as well as single sheets (from 2.2"x 2.7" up to 8.5" x 12"). The external mounted roll pick-up allows the use of label rolls up to a diameter of 9" that is second to none in its class.

According to the modularity construction system the KOMDRUCK *ILP* can be configured and enhanced individually. Choose between two printer models: a standard and a Metal Case version. The standard printer as well as the Metal Case version comes with a manual tear-off and the roll pick-up. Besides that the KOMDRUCK *ILP* is upgradeable with an automatic cutter (for roll labels only) and several clamping plates to adjust to different roll core diameters (1" to 5").

Technical Specifications

Print Technology	Drop-on-demand thermal inkjet	
Print Quality	Black: up to 1200 dpi rendered black text Color: up to 4800 x 1200 optimized dpi	
Print cartridge capacity	Black: 19ml, Tri-Color: 17 ml, Photo: 17ml	
Compatible Operating Systems	Windows® XP, 2000	
Paper Sensors	Adjustable GAP, BlackMark sensor from 0 to 3.2"	
Media Dimensions	Max	Min
Label width	203 mm (8")	38 mm (1.5")
Etikettenträgerbreite	216 mm (8.5")	38 mm (1.5")
Label height	500 mm (19.7")	40 mm (1.6")
Gap	5 mm (0.02")	2 mm (0.08")
Media Feed	Sensor supervised label feed Single paper sheets (manual)	
Media Types	Rolls of labels and tags, fanfold paper and single paper sheets	
Label Rolls	Maximum label/tag roll diameter 9" Maximum roll width 8.5"	
Thickness of Paper/Label	Maximum 1mm (optional: up to 1.5mm)	
Label Detection	Fanfold, Gap, BlackMark	
Interfaces	IEEE 1284 Centronics/Parallel bidirectional USB 2.0 Plug & Play (Windows)	
Power Requirements	Input voltage: 100 - 240 VAC (+/-10%), 50/60 Hz (+/-3%)	
Power Consumption (maximum)	32 W when printing 4 W when idle 2 W when off	
Dimensions (W x H x D) - Weight	447 (W) x 250 (H) x 325 (D) mm –10,5 kg (23,2lbs.) (plastic) and 11,2kg (24,7lbs) (metal) 447 (W) x 370 (H) x 325 (D) mm (incl. Label Roll)	
Warranty	1 year warranty (bring-in) optional: 24, 36 and 48 months warranty extensions (on-site, bring in, exchange)	



Reseller/Sales Partner:



All brand and product names are trademarks of their respective companies. All information contained in this document is subject to change without prior notice.
© Copyright KOMDRUCK 2007

The KOMDRUCK *ILP* is the ideal printer for short-run color label printing.

Applications:

- ▲ Custom Labeling, RFID-Tags
- ▲ ID Cards and other Identification
- ▲ Picture Shelf Labels
- ▲ Color-picture coding
- ▲ etc.

Ideal for:

- ▲ Small product runs
- ▲ Security, Admission control
- ▲ Warehouses
- ▲ Governments
- ▲ Ticketing Offices
- ▲ Medical and Legal Offices
- ▲ Small Companies
- ▲ Hospitals, Libraries
- ▲ Event Management, Marketing Agencies
- ▲ etc.

Order Information

D-KD-ILP	KOMDRUCK ILP Ink-Label-Printer (Standard Model)
D-KD-ILP-MC	KOMDRUCK ILP Ink-Label-Printer (Metal Case)

Accessories

D-KD-ILP-006	Automatic Cutter (Metal Case only)
	1" Roll Core Clamping Plates (Set of 3)
	2" Roll Core Clamping Plates (Set of 3)
	4" Roll Core Clamping Plates (Set of 3)
	5" Roll Core Clamping Plates (Set of 3)

Ink-Cartridges

V-KD-ILP-C	ILP Tri-color (M/C/Y) Ink-cartridge
V-KD-ILP-B	ILP black Ink-cartridge
V-KD-ILP-P	ILP Photo Ink-cartridge